

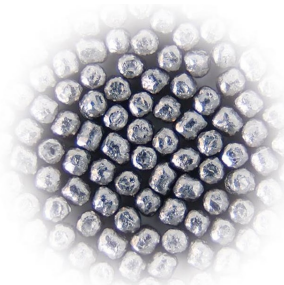
STAINLESS STEEL CUT WIRE

>> SURFACE HARDENING (SHOT PEENING)

Grain shape :



AS CUT (Cylindrical)



CONDITIONED (Rounded)

Aluminium Die casting parts :



Application :

AS CUT (Cylindrical)

Blasting cleaning, deburring descaling, surface texture of non-ferrous parts, preliminarily stainless steel castings, Stainless steel investment castings, welded components & construction texturing stainless steel wire rods in order to dimple the surface prior to cold drawing bronze & brass parts, AI-Forgings, AI-Castings, particular sand castings. Temporary corrosion protection of hot formed and descaled HS steel parts (Side impact Beams).

CONDITIONED (Rounded)

Shot peening of components that are sensitive to residues (impinged shot) that might cause corrosion (Stainless steel springs, Stainless steel Extrusion Screws, Components for paper mills, Off shore drilling rods for crude oil exploration, components for Ship Industries-Navy-)

Steel Grade :

1.4310/ 1.4301 (AISI 302/ 304) - depending on the required hardness and the application (austenitic Chrome Nickel stainless steel - slightly magnetic, particular as work mix)

Superior overall performance due to :

- High durability: specially selected raw-material.
- Low dust development.
- High peening efficiency: in turns of transferred kinetic energy based on consistent core-hardness & core ductility and superior surface hardness & roughness.
- Size & Shape (Rounded shape) consistency.



SIAMBRATOR CO.,LTD.

Sintokogio Group

27/9 Moo 5, Paholyothin Road, Klong Nueng,
Klong Luang, Pathumthani 12120, Thailand
Tel : 662 516 3925 - 6 Fax : 662 516 3927
Email : sales@siambrator.com

Call us and ask for a visit :



STAINLESS STEEL CUT WIRE

>> SURFACE HARDENING (SHOT PEENING)

Product specification :

	SUS 201	SUS 304
Properties		
Hardness	400HV0.5/1 - 600 HV0.5/1	
Microstructures	Austenite, Non-magnetic	
Chemical composition		
Cr	16.00 - 18.00 %	18.00 - 20.00 %
Ni	3.50 - 5.50 %	8.00 - 10.50 %
Mn	5.50 - 7.50 %	2.00 % max
N	0.25 % max	-
Shape of Grain	< 2.00 %	< 2.00 %

	SUS 410	SUS 430
Properties		
Hardness	250HV0.5/1 - 450 HV0.5/1	
Microstructures	Ferrite, Magnetic	
Chemical composition		
Cr	11.50 - 13.00%	16.00 - 18.00%
C	< 0.15%	< 0.12%
Si	< 0.50%	< 0.75%
P	< 0.04%	< 0.04%
Mn	< 1.00%	< 1.00%
S	< 0.03%	< 0.03%
Shape of Grain	< 2.00%	< 2.00%

Material :

SUS 201 SUS 304 SUS 410 SUS 430

Other materials upon request

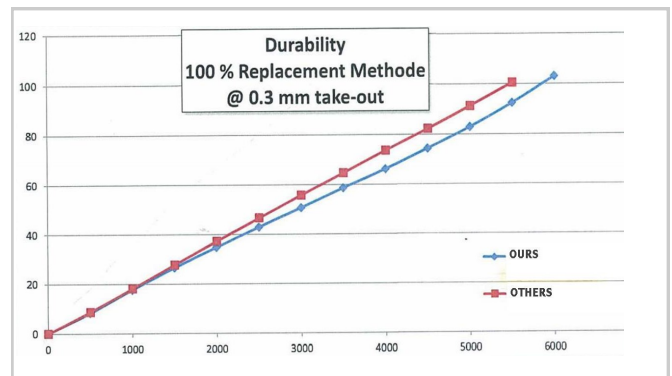
Manufacturing standards/ Application specifications :

AMS 2431/4, SAE J 441, VDFI 8001

Packing :

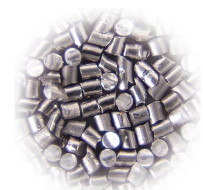
25 Kg paper bag, Other package upon request

Life comparison with others' product

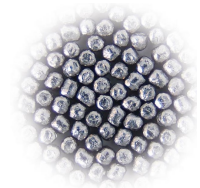


Size Distribution :

Sieve (mm.)	Grain size (mm.)						
	1.20	1.00	0.80	0.60	0.50	0.40	0.30
1.300	5% Max						
1.200	85% Min						
1.100	5% Max	5% Max					
1.000		85% Min					
0.900		5% Max	5% Max				
0.800			85% Min				
0.700			5% Max	5% Max			
0.600				85% Min	5% Max		
0.500				5% Max	85% Min	5% Max	
0.400					5% Max	85% Min	5% Max
0.300						5% Max	85% Min
0.200							5% Max



AS CUT (Cylindrical)



CONDITIONED (Rounded)